



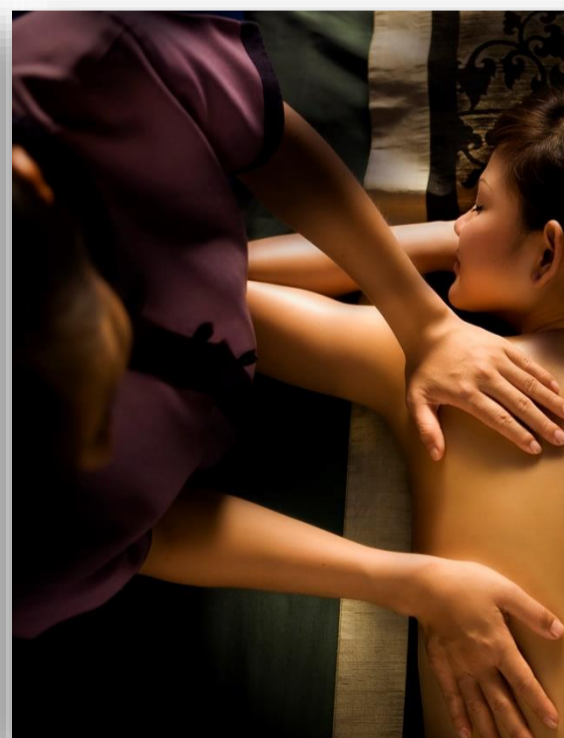
STEP INTO A SANCTUARY FOR THE SENSES



Going back to basics, where wellness is simply about embracing the nature and surrendering to the art of human touch are what our Founder and Executive Chairman, Mr. Ho Kwon Ping had in mind when he first started the spa.

These ideals became the cornerstones of Banyan Tree Spa, pioneer of the tropical garden spa concept. Over the years, the intuitive touch of our spa therapists, the seamless blend of serenity with exotic sensuality and the beauty of the natural environment have come to define the award-winning Banyan Tree Spa experience.

Enjoy the difference.



All Banyan Tree Spa treatments (except hand, foot, and waxing) come with a complimentary 30-minute. Calm Time of refreshments and relaxation, comprising a welcome Foot Bath, and some post-treatment time to relax over a herbal drink and refreshments.



PLEASE TAKE A MOMENT TO READ THIS

Etiquette

For the consideration of others, we request that visitors keep noise to a minimum. Children are not allowed at the spa unless they are having a treatment, accompanied by an adult. We ask that you respect other guests' privacy by speaking softly. Please switch your cellular phones and electronic devices off or to silent mode.

Operation Hours

Every day 11AM – 9 PM

Calm Time

Guests will be accorded a 30-minute Calm Time of refreshments and relaxation per visit, except fusion focus, hand, foot, hair, and selected a la carte treatments.

Check-in

Please arrive at least 15 minutes prior to your scheduled treatment to avoid reduced treatment time. A late arrival will result in a shortened treatment to accommodate other guests fairly.

Valuables

We recommend that no jewelry be worn at the spa. The management and staff accept no responsibility for the loss of money or valuables of any kind brought into the spa premises.

Smoking and Alcohol

Smoking and the consumption of alcohol within the spa are prohibited.

Cancellation Policy

Reservations can be canceled or changed until 21:00 the day before the reservation date. (Exclusion from group) After that and on the day of reservation, A 100% cancellation fee will be charged.

Refund Policy

Treatment packages are non-refundable. Unused portion of the packages are non-transferable or non-exchangeable for another time.

Gift Certificates

Treat a friend or loved one to an indulgent experience. Gift certificates are available for purchase. Please contact our spa receptionist for more details.

Disclaimer

The spa treatments, services and/or facilities received or utilised at Banyan Tree Spa are intended for general purposes only and are not intended to be a substitute for professional medical treatment for any condition, medical or otherwise, that Guests may have. Guests will fully indemnify and hold harmless Banyan Tree Spa, its holding company(ies), affiliates, subsidiaries, representatives, agents, staff and suppliers, from and against all liabilities, claims, expenses, damages and losses, including legal fees (on an indemnity basis), arising out of or in connection with the spa treatments, services and/or facilities.

All Banyan Tree Spa treatments (except hand, foot, and waxing) come with a complimentary 30-minute Calm Time of refreshments and relaxation, comprising a welcome Foot Bath, and some post-treatment time to relax over a herbal drink and refreshments.



SPA MENU



BANYAN SIGNATURES

MASSAGES

TIME-HONOURED TRADITIONS

FACIAL TREATMENT

TAILORED FOR YOUR SENSES

BANYAN DAY

HEAD SPA

BODY TREATS

All Banyan Tree Spa treatments (except hand, foot, and waxing) come with a complimentary 30-minute. Calm Time of refreshments and relaxation, comprising a welcome Foot Bath, and some post-treatment time to relax over a herbal drink and refreshments.



BANYAN SIGNATURES

The ultimate pampering experience, Banyan Signatures features holistic treatments for your complete physical, mental and spiritual renewal.

Royal Banyan

150-minute treatment

KRW 525,000

A well-loved treatment, Royal Banyan delivers the best of Eastern and Western massage techniques to improve blood circulation and ease muscle aches. Featuring a warm herbal pouch dipped in Sesame Oil, this signature treatment presents the quintessential Banyan Tree Spa experience like no other.

Cucumber Cleanser • Royal Banyan Herbal Pouch Massage • Jade Face Massage • Therapeutic Herbal Bath

Sense of Place - The Korean Essence

120-minute treatment

KRW 450,000

This experience harnesses the best of locally-sourced ingredients to offer guests an authentic flavour of Korea. This treatment starts with a body scrub using Korean green tea leaves to prepare you for a body massage using various techniques of elbows, firm strokes and knuckles to soothe the muscles.

Korean Green Tea Exfoliator • Korean Massage • Express Facial

Master Therapist Experience - suspend

90-minute treatment

KRW 350,000

Restore energy that was thought to be long gone. Drawn from the expertise of the Master Therapist, indulge in a specially tailored treatment using a repertoire of massage techniques and tools. Therapist will first take time to understand the profile of each individual guest before customising a package best suited to meet his or her needs.

All Banyan Tree Spa treatments (except hand, foot, and waxing) come with a complimentary 30-minute. Calm Time of refreshments and relaxation, comprising a welcome Foot Bath, and some post-treatment time to relax over a herbal drink and refreshments.



TIME-HONoured TRADITIONS

Inspired by ancient traditions dating back centuries, this selection of classic therapies features timeless secrets of wellness and beauty.

Chinese Tradition

90-minute treatment

KRW 350,000

A massage technique used for centuries to heal the body, Tui Na improves mobility and circulatory health by correcting the flow of Qi in the body. Restore harmony and balance through this powerful healing technique and enjoy complete physical relaxation.

Oriental Massage • Oriental Head Massage

Indian Tradition

90-minute treatment

KRW 390,000

This beautifying regime features Ayurvedic traditions with aromas that bathed the grounds of Indian palaces. Allow the therapist to restore vitality to your energy channels and strengthen your immune system. The Shirodhara effectively relieves anxiety as a soothing stream of warm oils flows onto your forehead.

Ayurvedic Massage • Chakra Head Massage • Shirodhara • Lepam • Steam Bath

Indonesian Traditions

120-minute treatment

KRW 450,000

Practiced in the palaces of Central Java, you can now indulge in bliss fit for royalty. The deep tissue Balinese massage using strong, firm strokes dissolves all muscle tension. The divine treatment adopts century-old beauty recipes which include healing ingredients and their renowned floral baths to awaken the senses.

Balinese Massage • Lulur Purifier • Yoghurt Body Splash • Fresh Milk Nourisher • Jamu Bath

Thai Traditions

120-minute treatment

KRW 450,000

The therapeutic stretching of the massage alleviates internal tension and enhances flexibility of the body. Feel the soothing heat on your muscles and be wrapped in a healing remedy of Thai herbs. Soak in the goodness of an uplifting Ginger Bath as you step out with glowing skin.

Ginger Refresher • Thai Herbal Heat Treatment • Herbal Enhancer • Thai Classic Massage • Aromatic Ginger Bath

All Banyan Tree Spa treatments (except hand, foot, and waxing) come with a complimentary 30-minute. Calm Time of refreshments and relaxation, comprising a welcome Foot Bath, and some post-treatment time to relax over a herbal drink and refreshments.



TAILORED FOR YOUR SENSES

Create your very own spa experience with favorites from a curated list of components. Select your desired duration then mix and match with the body treats of your choice.

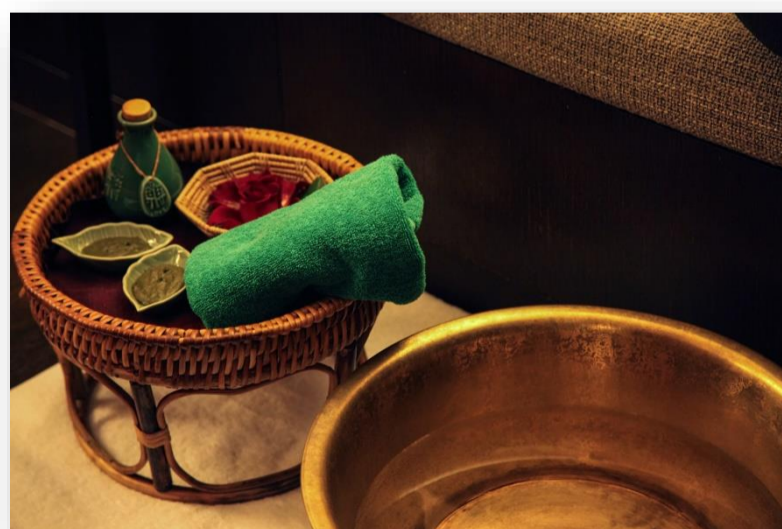
Tailored for your sense 90min

- 60min Body Massage + 30min Scrub • KRW 330,000
- 60min Body Massage + 30min Conditioner • KRW 330,000
- 60min Body Massage + 30min Focus Massage
(Back Reviver / Head & Shoulder Reviver – Choose 1) • KRW 360,000
- 60min Body Massage + 30min Express Facial • KRW 360,000

Tailored for your sense 120min

- 60min Body Massage + 60min Facial Treatment • KRW 470,000

*For optimal relaxation and benefit, the duration of combined massages would be 90 minutes.



All Banyan Tree Spa treatments (except hand, foot, and waxing) come with a complimentary 30-minute. Calm Time of refreshments and relaxation, comprising a welcome Foot Bath, and some post-treatment time to relax over a herbal drink and refreshments.

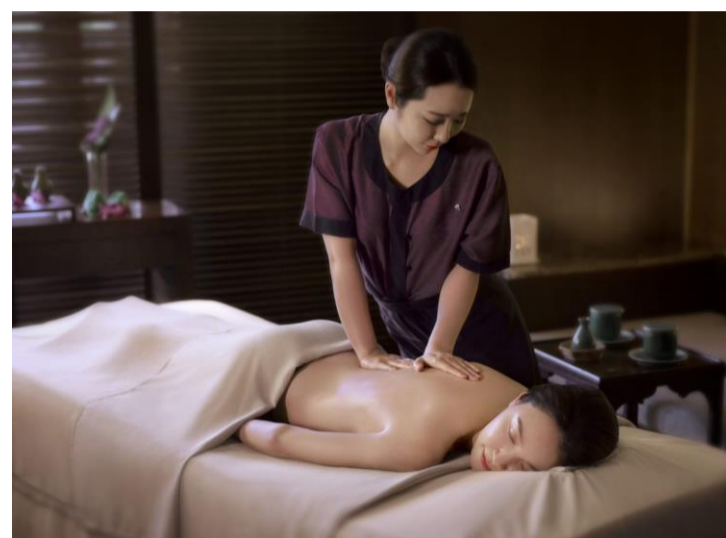


MASSAGES

1) FULL BODY MASSAGE

Choose from an indulgent array of massages, and surrender to the intuitive touch of our professionally trained therapists. Choose from Touch of Love or Touch of Peace massage oil to complement your state of mind and achieve desired effects.

60-minute treatment	90-minute treatment
KRW 260,000	KRW 340,000



Balinese

A medium to strong massage where the therapist applies deep thumb and palm pressure with slow, firm, rhythmic strokes. These techniques uplift the senses and ease muscle tension, leaving you fully invigorated.

Deep Tissue

A medium to strong deep pressure massage which minimizes recovery time for stressed and tense muscles. The intensive strokes work to loosen and relax the muscles.

Gentle Touch

Be pampered by this soft to medium massage where soothing, long strokes and thumb pressure are applied in tandem to relax the body. Ideal for guests who prefer a lighter massage pressure or expectant mothers, children and the elderly.

Thai Classic

A perfect mix of subtle stretching with rhythmic massaging and compressions to balance the body system and stimulate energy flow. This classic massage uses traditional Thai techniques to apply deep palm strokes on the back with delicate stretching.

Thai Essence

A medium to strong massage adapted from traditional Thai massage techniques which improves overall flexibility from top to toe. Palms and thumbs are applied to pressure points to relieve tired muscles and to boost energy. No oil is used and a two-piece outfit is worn.

Hot Stone (90 – minute only)

A 90-minute massage where heated stones are soothingly massaged over your body, along with the use of warm Clarity Oil, a blend of sesame, jojoba and Vitamin E, to exert warmth and pressure on energy points. It is beneficial for smoother flow of “qi” and discharge of toxins from your system.

All Banyan Tree Spa treatments (except hand, foot, and waxing) come with a complimentary 30-minute. Calm Time of refreshments and relaxation, comprising a welcome Foot Bath, and some post-treatment time to relax over a herbal drink and refreshments.



MASSAGES

2) FUSION FOCUS

Designed for guests who are on-the-go, Warm Clarity Oil is used in all massages to soothe nerves and moisturize skin.

30-minute treatment	45-minute treatment
KRW 140,000	KRW 180,000

Back Reviver

For the backaches resulting from long hours spent at the desk, this massage serves as a perfect relief to iron out tension and pain.

Foot Release

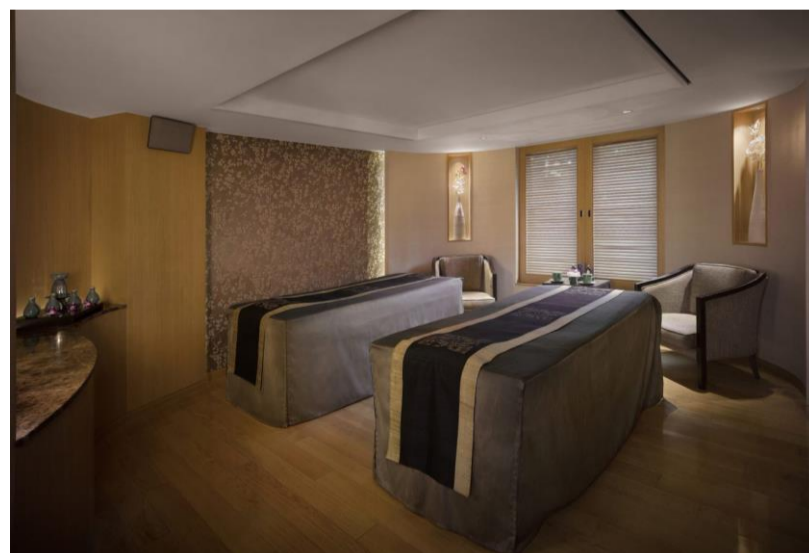
Pamper your soles with this relaxing massage concentrating on the pressure points to rejuvenate tired, worn muscles from the heel to the tips of the toes.

Hand Relax

Take good care of your arms, hands and fingers by reducing stress and tension. This massage prevents locked fingers and increases mobility.

Head & Shoulders Reliever

Let your therapist knead your stress and headaches away with this simple but effective massage to improve flexibility and blood circulation within the head. Guests can choose to enjoy this massage with or without oil.



All Banyan Tree Spa treatments (except hand, foot, and waxing) come with a complimentary 30-minute. Calm Time of refreshments and relaxation, comprising a welcome Foot Bath, and some post-treatment time to relax over a herbal drink and refreshments.



FACIAL TREATMENT

Indulge in our facial treatments to leave your skin glowing with refreshed vitality. Each facial includes a Shoulders & Arms Massage to surround you in a state of total bliss.

90-minute treatment

KRW 450,000

Premium – Premium Time Defense (Anti-Aging)

For All Skin Types

A facial packed with skin renewal properties to bring out that youthful glow again. Nourish your skin with a cream mask filled with active serums and a radiance ice cube complex to reveal a visibly fresher looking complexion and reduced fine lines. Suitable for all skin types.



60-minute treatment

KRW 260,000

Basic – Hydro Treat (Hydrating)

For Dry / Combination Skin

Pamper dull devitalised skin with the moisture it craves with this intensive hydrating facial. Indulge in a mineral-infused velvet cream mask, which soothes and nourishes, delivering a surge of rich comforting moisture, leaving the skin dewy and supple. Suitable for normal and combination skin.

Basic – Sheer Comfort (Relaxing)

For Sensitive Skin

A calming treat that provides gentle comfort and soothes irritations, this facial reduces redness and dark spots with a moisturising cream mask enriched with anti-oxidising properties. Emerge from the finest Banyan Tree Spa experience with a dewy, radiant complexion. Suitable for sensitive skin.

All Banyan Tree Spa treatments (except hand, foot, and waxing) come with a complimentary 30-minute. Calm Time of refreshments and relaxation, comprising a welcome Foot Bath, and some post-treatment time to relax over a herbal drink and refreshments.



BANYAN DAY

For a full day of pampering and indulgence, the Banyan Day experience features signature therapies for complete top to toe renewal. Besides luxurious spa treatments, a sumptuous yet healthy spa cuisine lunch complements the wellness experience.

285-minute treatment & 90-minute lunch

KRW 830,000

Morning

Choice of Body Scrubs • Apple Green Tea polisher • Turmeric Honey Cleanser	30 minutes
Choice of Body Conditioners • Honey Avocado Healer • Chrysanthemum Enhancer	30 minutes
Choice of Body Massages	90 minutes
Herbal Bath	15 minutes

Afternoon

Pevonia Facial Treatment	60 minutes
Hand & Foot treatment (Hand & Foot Scrub, Exfoliation, Massage & Paraffin)	60 minutes

Lunch (Sauna Lounge)

Spa Cuisine 1

- **Burrata, tomato Salad**
Herb, Basil Pesto, Balsamic
- **Grilled Beef Striploin**
Asparagus, Mushroom, Green beans
- Served with fresh fruit and choice of fresh juice, orange or grapefruit

Spa Cuisine 2

- **Chicken Breast, Avocado Salad**
Tomato, Lettuce, Endive, Pine nut
- **Grilled Salmon with Barley Salad**
Clam, Arugula, Blue berry Jangajji
- Served with fresh fruit and choice of fresh juice, orange or grapefruit

All Banyan Tree Spa treatments (except hand, foot, and waxing) come with a complimentary 30-minute. Calm Time of refreshments and relaxation, comprising a welcome Foot Bath, and some post-treatment time to relax over a herbal drink and refreshments.



BANYAN DAY

For a full day of pampering and indulgence, the Banyan Day experience features signature therapies for complete top to toe renewal. Besides luxurious spa treatments, a sumptuous yet healthy spa cuisine lunch complements the wellness experience.

285-minute treatment & 90-minute lunch

KRW 830,000

Morning

Choice of Body Scrubs • Apple Green Tea polisher • Turmeric Honey Cleanser	30 minutes
Choice of Body Conditioners • Honey Avocado Healer • Chrysanthemum Enhancer	30 minutes
Choice of Body Massages	90 minutes
Herbal Bath	15 minutes

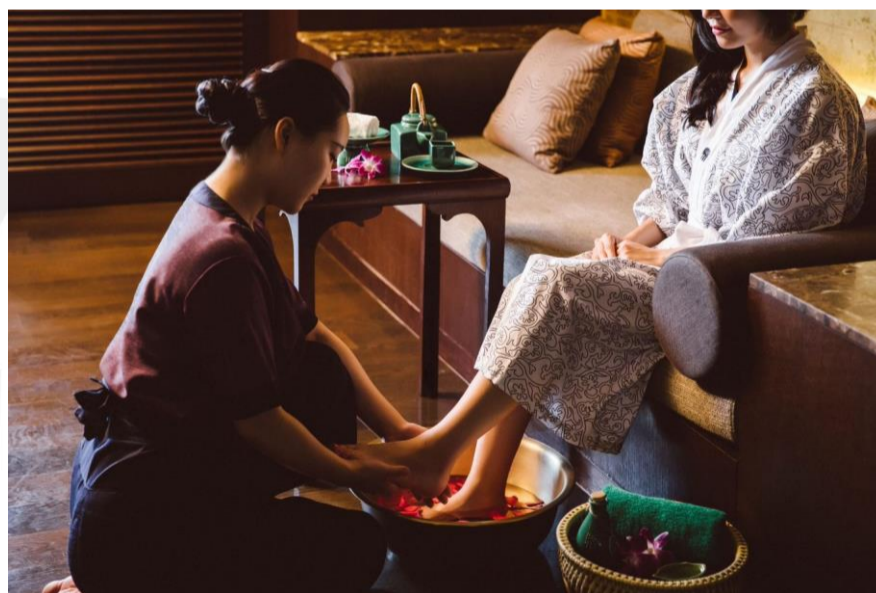
Afternoon

Pevonia Facial Treatment	60 minutes
Hand & Foot treatment (Hand & Foot Scrub, Exfoliation, Massage & Paraffin)	60 minutes

Lunch (Granum)

Spa Cuisine

- **Smoked Salmon Caesar Salad**
Romaine, Endive, Shallot, Dill, Caper
- **Vongole Linguine**
Garlic, Zucchini, Peperoncino
- Served with fresh fruit and choice of Coffee or Tea



All Banyan Tree Spa treatments (except hand, foot, and waxing) come with a complimentary 30-minute. Calm Time of refreshments and relaxation, comprising a welcome Foot Bath, and some post-treatment time to relax over a herbal drink and refreshments.



BODY TREATS

1) BODY SCRUB

30-minute treatment

KRW 110,000

Apple Green Tea Polisher

For All Skin Types & Sensitive Skin

Natural acids from the apple acts as a gentle cleanser while the green tea powder nourishes the skin with its anti-oxidant properties. The skin feels softer after this treatment and skin cells are naturally renewed.

Kieffer Lime Refresher

For Normal & Oily Skin

Fresh lime peels gives a delightful scent and acts as an antiseptic. The wheat germ included in the scrub smoothen fine lines with its rich Vitamin E content while the honey nourishes the skin.

Ginger Lemon Cleanser

For Oily Skin

The warming effect of fresh ginger paired with the citric fruit acid from lemon makes this body scrub a perfect cleanser. Let the refreshing scent of the natural ingredients relax your body as you look forward to refined and radiant skin.

Turmeric Honey Cleanser

For All Skin Types

Known for its healing and cleansing properties, turmeric mixed with honey, tamarind and sesame seeds forms this refreshing scrub. The oil from the crushed sesame seeds ensures that the skin is not stripped dry by the scrub.



All Banyan Tree Spa treatments (except hand, foot, and waxing) come with a complimentary 30-minute. Calm Time of refreshments and relaxation, comprising a welcome Foot Bath, and some post-treatment time to relax over a herbal drink and refreshments.



BODY TREATS

2) BODY CONDITIONERS

30-minute treatment

KRW 110,000

Aloe Lavender Healer

For All Skin Types & Sensitive Skin

Aloe and lavender are known for their healing and purifying properties. Excellent for sensitive skin, the mask improves skin condition, calms skin irritation and its light fragrance induces relaxation.

Chrysanthemum Enhancer

For All Skin Types

A nutritious mix of dried chrysanthemum, honey and lemon juice provides a moisturizing treatment to revitalize the skin. These ingredients are blended with protein-rich soya milk for extra benefits.

Honey Avocado Healer

For All Skin Types

The highly moisturizing honey and creamy Avocado make up this body conditioner which improves skin condition and restore softness to the skin. Its delightful fragrance leaves you feeling refreshed.

Kieffer Lime Mask

For All Skin Types

Uplift your senses with the zesty lime as you are wrapped in this invigorating and fragrant body mask. The ingredients are quickly absorbed, leaving the skin feeling soft and radiant.



All Banyan Tree Spa treatments (except hand, foot, and waxing) come with a complimentary 30-minute. Calm Time of refreshments and relaxation, comprising a welcome Foot Bath, and some post-treatment time to relax over a herbal drink and refreshments.



BODY TREATS

3) CALMING BATHS

30-minute treatment

KRW 70,000

Detoxing Bath

Relax your senses with a salt bath, an all-time favorite for centuries. Citrus fruits are added for extra zest.

Purifying Bath

Get pampered like royalty and unveil radiant, youthful skin after this moisturizing bath.

Relaxing Bath

Infused with indigenous flower from the destination, feel your mood lighten up with this fragrant bath.

Rejuvenating Bath

Uplift your senses and brighten up dull skin with herbs such as lemongrass and ginger, which are rich in antioxidants.



All Banyan Tree Spa treatments (except hand, foot, and waxing) come with a complimentary 30-minute. Calm Time of refreshments and relaxation, comprising a welcome Foot Bath, and some post-treatment time to relax over a herbal drink and refreshments.



BODY TREATS

4) Express Facial

30-minute treatment

KRW 130,000



Create a blissful treat for your face, select the combination which works best for your skin type. This facial begins with cleansing to remove impurities and ends with a moisturizer to restore radiance. Choose from scrub, mask or massage to give a clearer and brightened complexion.

Mask • Massage • Scrub choose 2

All Banyan Tree Spa treatments (except hand, foot, and waxing) come with a complimentary 30-minute. Calm Time of refreshments and relaxation, comprising a welcome Foot Bath, and some post-treatment time to relax over a herbal drink and refreshments.



HEAD SPA

Banyan Tree Head Spa provides personalized hair care through diagnosis. Head Spa treatment includes a Head & Shoulders Massage to surround you in a state of total bliss.

80-minute treatment

KRW 320,000

- Hair Softening
- Scalp Scaling
- Scalp · Lymph Massage
- Shampoo · Conditioner · Mask
- Neck · Shoulder Massage
- Rejuvenating Ampoules Injection
- Nourishing Serum · Oil



Sensitive, Intensive scalp care by Leonorgreyl

- Hydrating
- Scalp Soothing
- Scalp Purification
- Moisturizing
- Scalp Calming
- Regeneration
- Hair Nutrition

Hair Nutrition and volume by HAIR rituel by Sisley

- Hair Root Energy
- Regeneration
- Hair Toning
- Hair Nutrition · Coating
- Hair Elasticity
- Volume
- Strengthen and Revitalizing

All Banyan Tree Spa treatments (except hand, foot, and waxing) come with a complimentary 30-minute. Calm Time of refreshments and relaxation, comprising a welcome Foot Bath, and some post-treatment time to relax over a herbal drink and refreshments.